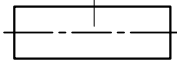


P/N: 60-13-2M11-019 (REV. A)

Description: SMA Right Angle Male Solder for RG405/.086 Cable

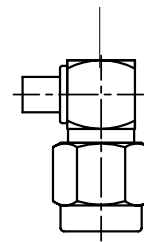
Heatshrink Sleeve  
(option)



Back Nut

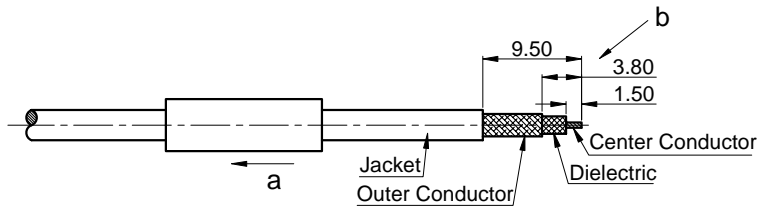


Main Body



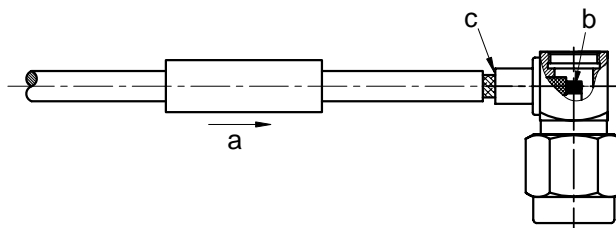
### STEP 1

- Slide the Heatshrink Sleeve onto the cable (option).
- Strip the cable according to the dimensions as below.



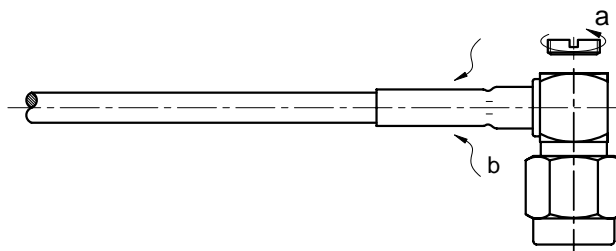
### STEP 2

- Slide the cable into the Main Body.
- Solder the cable's inner conductor.
- Solder the cable's outer conductor onto the Main Body.



### STEP 3

- Screw the Back Nut onto the Main Body.
- Slide the Heatshrink Sleeve over the Main Body and heatshrink it in place (option).



Note: Dimensions in millimeters (mm).